

Attachment #1

November 19<sup>th</sup>, 2021

# Chester COVID-19 Update

## 4173 POSITIVE COVID CASES

Updated November 19, 2021

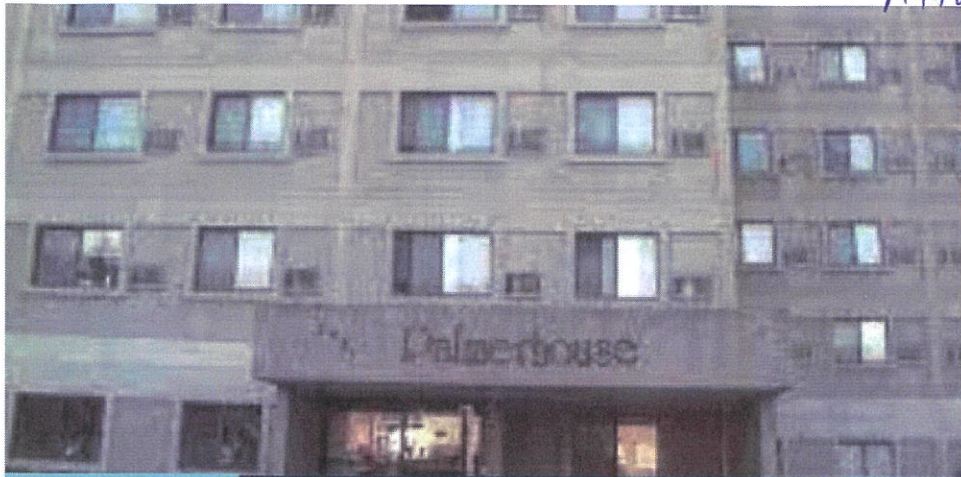
COVID-19 VACCINE RATES (November 12, 2021)		
At Least One Shot	Fully Vaccinated	Partially Covered
15,551 51.8%	13,644 45.4%	1907



Information updated weekly. Source: <https://www.health.pa.gov/topics/disease/coronavirus/Vaccine/Pages/Vaccine.aspx>

Hospital COVID-19 Cases and Available ICU Beds			
Hospital	COVID Patients	AVAILABLE ICU BEDS	ICU OCCUPANCY
Average of 24 hospitals in the area	18	9	75%
PA State average			84%
National Average			68%
Crozer Chester Medical Center Upland, PA	13	4	87%
Delaware County Memorial Hospital Orndel Hill, PA	2	09	89%
Children's Hospital of Philadelphia	15	-	-
Hospital of the University of Pennsylvania	22	16	88%
Mercy Catholic Medical Center-Mercy Fitzgerald	4	1	89%
Penn Presbyterian Medical Center Philadelphia, PA	14	5	93%

Source: New York Times <https://www.nytimes.com/interactive/2020/us/covid-hospitals-near-you.html>



COVID-19  
BOOSTER  
SHOTS

# COVID-19 VACCINATION and BOOSTER SHOT CLINIC

**Help to Protect Yourself and Others**

With the support of Everest Urgent Care, the City of Chester, PA is sponsoring a FREE COVID-19 Vaccine and Booster Shot Clinic.

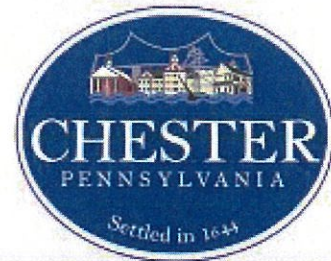
Date: December 2nd, 2021

Time: 11:00AM-1:00 PM

Location: Palmerhouse Apartments  
1420 Esrey St #621, Chester, PA 19013

**Pfizer and Moderna Vaccine  
Available**

DON'T FORGET  
your vaccine card and  
insurance or Medicare card  
(if you don't have insurance  
still come).



No Appointment Needed

Rosetta Carter: 610-447-7700 EXT: 7955

Ayanna King: 610-447-7700 EXT: 7919